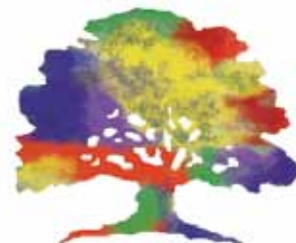


Campbell



CONNECTIONS

NEWS AND VIEWS FROM CAMPBELL UNITED METHODIST CHURCH

DECEMBER, 2013

Advent and Christmas Special Music

at

Campbell United Methodist Church

Friday Lunchtime Organ Concert

Friday, December 20 from 12:30 to 1:00 p.m.

⌘ Mary Ann Gee, organ; with Bill Gay, oboe

Christmas Concert

Sunday, December 15 at 3:30 p.m.

⌘ **The Many Moods of Christmas**, featuring Chancel Choir, Handbells, 30-piece orchestra, plus congregational singing
Reception following in Fellowship Hall

Christmas Eve, Tuesday, December 24

with candlelight singing

5:00 p.m. ⌘ Children's Pageant

8:00 p.m. ⌘ Communion Service - *music starts 7:45 p.m.*

11:00 p.m. ⌘ Lessons and Carols - *festival prelude at 10:30 p.m.*

African Epiphany Service January 5, 2014 at 10 a.m.

CONTENTS

Advent Calendar	1
Autumn Festival Collage	9
Bright Days	7
Cartoon Corner	6
Circuit Writer	6
Congregational Care	6
History Helpers	10
In the Community/ Birth of a TV Show	5
In the Community/ Season of Sharing	5
Methodist Connection/ Care-A-Vaners	7
Methodist Connection/UMW	8
Mission Control	6
On the Campus	3
Pastor's Pen	2
UMYF Calendar	9

from the Editor:

**PEACE and TRANQUILITY for the
Advent Season**

Communications Team is looking for a volunteer Content Editor.

If interested, contact Andrew Reynolds, areynoldsre@gmail.com.

Articles should be submitted in plain text, under 200 words unless a focus article (250 to 500). Send separate files for photographs in article - jpeg preferred.

Thank you,
Heather Reynolds ❖



Campbell Connections

A monthly publication of
Campbell United Methodist Church
Editor - Heather Reynolds
Copy Proofing - Dave Foyle
Gail Jacobs

The Campbell Connections is mailed the 3rd Wednesday* of each month. Deadline to submit an article is 4 p.m. on the 1st Wednesday of the month.

Submit article to Church Office
or e-mail the Editor at:
hreynolds63@gmail.com.

Newsletter contents copyright of
Campbell United Methodist Church, 2013.

*If there are 5 Wednesdays in a month the newsletter will be mailed on the 4th Wednesday & the deadline for articles will be on the 2nd Wednesday.

If you have any questions regarding the mailing, please call the office at 408-378-3472

❖
CAMPBELL UMC is a RECONCILING CONGREGATION
❖

CHURCH STAFF

PASTOR, Paul Kim
PASTOR FOR AFRICAN MINISTRY, Daniel Gbundema
CHOIR DIRECTOR, Bill Coye
ORGANIST, Mary Ann Gee

ADMINISTRATOR OF CHURCH BUSINESS

Barbara Wade
SECRETARY
Suzanne Dougan
FAMILY MINISTRY COORDINATOR
Julie Lattin
VOLUNTEER YOUTH COORDINATOR
Melinda Knepp
CUSTODIAN, Hector Estrada

Church Office: 408 378-3472
Web Site: www.campbellunited.org

❖
Sunday Worship: 10:00 a.m.
Adult Sunday School: 8:50 a.m.
Children's Sunday School: 10:15 a.m.
African Ministry: 11:30 a.m.
New Creation UMC Worship: 12:30 p.m.
Quiet Communion: 6:00 p.m. Tuesday

Bright Days Preschool

Mary Smith, Director: 408-378-8422
www.brightdayspreschool.com



Pastor's Pen

Looking Back on Year One

It's already been one year since Christie, Evie and I arrived in Campbell! Time flies when you are having so much fun! It's been wonderful to jump in the rhythm of life and activity at the Campbell United community.

When we arrived, we saw a community living through a time of testing and changes. We were a people in need of healing, a renewal of mutual trust, direction and stability.

So the immediate task on hand was to rebuild trust in the community. It was not to increase our attendance, get our finances on stronger footing, or improve our programs. The most important thing was to rebuild our community – which cannot be done overnight with a magic wand. The only way to do it was to return to the basics of being the church: worshiping, praying, serving, giving – and loving. Day in, day out. I chose Luke 10:27 as our North Star (and my Gmail address for the church). What changes one year has brought our way!

During the past year, we have experienced God's mercy and grace in our community. By being the church, barriers have been broken, trust regained, and order and function restored. We are in the process of being healed. People are more willing to take risks, giving of themselves. There is a different Spirit in this place! There is laughter and smiling; we are more relaxed. We are dreaming a new dream of what can be.

Our church is like a symphony orchestra (or if you prefer - any sports team, like the 49ers or the Raiders). The pastor serves as the conductor (coach). With each instrument performing at its best, harmony is created when the instruments are in sync with each other, following the conductor's baton. It is up to the conductor to involve all sections of the orchestra needed to create beautiful music. Focusing only on the biggest instruments or ignoring the lesser used instruments will not make music. All instruments are needed.

With the consolidated 10 a.m. service – our main traditional worship service – in place and flourishing, an Alternative Worship Task Force is beginning to explore how we can bring unchurched and non-churchgoing younger generations to faith. Our aging members are being cared for in many different ways; through care-givers, through community services; and, support groups. We look to grow our small group ministries in 2014 so everyone is caring for each other. With old and new staff, our Children, Family, and Youth ministries are poised to grow in building loving relationships and outreach to the larger community.

As it has done in the past with Wesley Manor and Bright Days, our church continues to serve the world community in new ways – Elmwood Jail ministry, supporting Rosemary school, building interfaith relationships, Sierra Service Projects, Stop Hunger Now, Second Harvest...in serving others, our hearts are being enlarged. The Welcome Teams – Ushers, Greeters, Newcomers & Friends - are honing their skills to sell out our "symphony hall," preparing to receive neighbors, guests, and new audiences.

I want to express my thanks to all of you for your unceasing prayers for me and Christie, and your words and acts of kindness and generosity.

In this Joyous Season when the angelic chorus sings, "Peace on Earth, Good Will to All God's People," I pray that there will be endless sounds of laughter and love as well as profound silence and fervent prayers flowing from each of our hearts and from our Campbell United community – blessing families, neighborhoods and the world around us. Merry Christmas!

Pastor Paul and Christie



From Church Council

The October Church Council voted to move Sunday worship to a single 10 a.m. service. Although it was not a unanimous vote, the majority of members reported that they enjoyed the energy of worshipping in a larger group. The Church Council heard how some members would be inconvenienced with a time change and could possibly not make a 10 a.m. hour commitment. We encourage members to carpool, to reduce congestion in the parking lot, and reach out to those who do not have transportation.

The Church Council saw the benefits of a single service such as a less rushed hospitality time and more time for classes and groups to meet before or after service. The consensus was that the gains in community spirit outweighed the inconveniences of a timetable disruption.

Having one service will not mean decreasing opportunities to worship. A task force has been developed to explore other worship times, styles and formats, focusing on the people we hope to reach out to in our community.

Bruce Hallinan
Chair, Church Council ❖

Alternative Worship Task Force

The Worship Commission appointed a Task Force to explore alternative worship services. Its goal is to equip our church with a "wider net" in a second service with a distinctively different style and feel to pull in young adults and families with children who would be attracted to a different worship style. Its focus will be to explore starting a new worship service, not changing the 10 a.m. service. The Task Force will visit other churches, study current trends and make a recommendation

to the Church Council at its April 2014 meeting.

The Alternative Worship Task Force will be led by Dave Foyle, with following members: Mary Ann Gee, Bruce Hallinan, Christie Huh, Lee Ann Kolker, Julie Lattin, Geoff Pilling and Tamba Tugbawa. If you have suggestions and ideas, please speak to Dave or any of the members. ❖

Merry Mayhem

This event was originally named Advent Workshop, but Merry Mayhem has been added to the title to increase overall attention to Campbell UMC's signature Christmas celebration. Merry Mayhem 2013 will be held Sunday, December 8, from 2-5 p.m. in the Fellowship Hall and Fireside Room. Mark your calendars to share the Christmas spirit through crafting for all ages, cookies, cider, tree decorating and caroling. Please remember to bring the following items:

- An ornament symbolizing Christmas and peace for our church
- Food items to fill our donation bins

If you are a crafter willing to teach/make a craft with event participants, please contact Julie Lattin, Family Ministry Coordinator, at campbellumcfamilies@earthlink.net and "CC" jklattin@gmail.com. Julie can also be reached by cell: 509-290-1685 and through the church office at: 408-378-3472. ❖

End of Year Donations!

If you plan on making any end-of-year donations, please remember that they must be received by the church by December 31st, or postmarked by December 31st if mailed. Stock donations need to be transferred into the church account on or before December 31st. Please allow at least one week for the electronic transfer from your account to the church account.

If you are making a Charitable IRA Rollover, please talk to your tax preparer or accountant about timing. Rollover gifts may be made in 2013, but the special transition rules that allowed gifts made early in 2013 to be credited to 2012, are not in effect for 2013/2014.

December Check Run for Reimbursements

Because of the way the calendar falls in December, we will only have ONE check run in December for reimbursements on Monday, December 16th. Vouchers will be due Friday, December 13th. If you have any items needing reimbursement, please turn them in by the 13th. It is critical that 2013 expenses get paid from the 2013 budget, rather than from 2014. ❖

Christmas Eve 2013 Potluck Dinner

The church is planning to hold a potluck dinner on Christmas Eve, Tuesday, December 24 from 6:15 p.m. till 7:30 p.m. for folks who would enjoy this informal gathering at such a wonderful time of the season. There will be a sign-up table during the first three Sundays in December. You will find details there.

Any questions, please contact Mary Ann Gee at: mary_ann_gee@yahoo.com ❖

SCRIP Special Orders

The Holidays are coming and Scrip can help! Stop by the Scrip table after service to see the incredible list of available gift cards we can order for you. Plus we have a pretty good selection right there at the table too!

Pick one up and take it with you. You can fill it out later and return it by December 1st to pick up orders on December 8th. Extra forms are also in the church office.

Your HAPPY SHOPPING is fund-raising for your church!

Thank You ❖

On the **CAMPUS**

continued from p. 3

Make Christmas Brighter for Those Less Fortunate

We all get so caught up in the noise and rush to buy the latest gifts and toys that we lose track of the point of Christmas. This Christmas season, we have the opportunity to give to others in three unique ways – Alternative Gift Faire, InnVision Adopt-A-Family and the Giving Tree.

Alternative Gift Faire Brings Christmas at the Local and Global Level

Pick the gift that gives twice by making a donation in the name of someone special for Christmas. Through Heifer Project, you can buy sheep, goats, rabbits, honeybees and more to help villages support themselves. Or select hygiene kits, soccer balls and blankets from Church World Services. A sack of cement, bathroom sink or box of nails will help Habitat for Humanity build another home in our neighborhood. Make life a little more comfortable for one of God's creatures by donating to the weekly care of an injured duckling, squirrel, raccoon or hawk at the Wildlife Center of Silicon Valley. There are many worthy causes. Stop by the Alternative Gift Faire table during Fellowship time from Nov. 17 to Dec. 8 and check out the various Christmas gifts you can give to others.

Adopt An Entire Family for Christmas

This year's Adopt-A-Family program is through InnVision Shelter Network. Families, groups or committees can sign up to adopt a family and shop for their Christmas wish list. The following levels are available:

- Adopt a family of 2-3 (around \$150 for 4-6 wishes)
- Adopt a family of 4-5 (around \$300 for 8-10 wishes)
- Adopt a family of 6 or more (\$400+ for 12+ wishes)

Please contact Charlie Slayman at cslayman@gmail.com or 408-603-

6276 and let him know the family size you would like to adopt for Christmas and to receive a wish list.

Giving Tree Provides Christmas Gift Opportunities to Individual Children

The Giving Tree provides Christmas Gifts to underprivileged children through the Salvation Army. You can select ornaments with a gift listed on them from the Giving Tree located in the entrance to Fellowship Hall. Select as many ornaments as you would like to shop for. Deadline to bring gifts to the church is Monday, December 16. They will be picked up by Salvation Army. PLEASE DO NOT WRAP GIFTS.

Charlie Slayman, Missions ❖

Julie Lattin - New Family Ministry

Julie Lattin is originally from Texas, and grew up in a small town near Houston: Dayton, TX. She was baptized and raised in the First United Methodist Church (UMC) of Dayton. Julie participated in Sunday School and the children's choir there, and her mother was a UMYF leader. After high school graduation, she received her bachelor's degree in Elementary Education from Sam Houston State University in Huntsville, TX. Julie began her teaching career in Huntsville and a Houston suburb before leaving home to teach in Washington, DC. It was there she met her husband, Chris.

Chris, an engineer with his undergraduate from Virginia Tech, was working as a Patent Examiner for the U.S. Patent and Trademark Office. On weeknights, he attended law school at George Mason University through completion of his degree. Julie and Chris were active in Calvary UMC in Arlington, VA, prior to and after their 2002 wedding. Chris began his patent law career in a Northeast law firm. However, in August 2006, he pursued an opportunity in the Northwest when he accepted a position at a firm in Spokane, WA.



Julie and Chris's son, Will, was born in Spokane in May 2008. Julie stayed at home during their WA state residency, but was an active volunteer and Board Member of the Junior League of Spokane.

The Lattins visited/attended several churches throughout the Spokane area. Following Will's birth, early parenting and church attendance was a great challenge for the family. It was during this time when Julie began to recognize the importance of children's ministry, coupled with congregational awareness of the concerns of young families.

In August 2012, Chris was offered an in-house patent law position at a corporation in the South Bay area. In November of the same year, the Lattins discovered Campbell UMC when touring Bright Days pre-school for Will. Julie and Chris were impressed with Campbell UMC's music program, and the welcoming attitude of not only the adults, but also the children. They noticed how comfortable Will seemed with the children at Campbell UMC. In September 2013, prior to Julie's acceptance of the Family Ministry Coordinator position in October, the Lattin family joined Campbell UMC.

Julie's greatest recollection of her childhood church was the strong impact made upon her when adults other than her parents not only taught, but also modeled Christian values. As a young adult, she practiced the same concept through active church volunteering with children and youth. As Campbell UMC Family Ministry Coordinator, Julie plans to follow God and the role-models of her childhood years by building family relationships, planning quality family events, providing spiritual inspiration and increasing children's ministry training opportunities. She is also looking forward to connecting all generations within the Campbell UMC congregation. ❖

In the COMMUNITY

THE BIRTH OF A TV SHOW



Seven years ago at our church, I had the privilege of telling the story of our dearly departed Don Olson, who had died of a cardiac arrest and was miraculously brought back to life. Many members of our church were involved with his story. Doctors were convinced he would be vegetative if he ever came out of his coma. To everyone's amazement, Don not only came out of his coma, but lived a vibrant and healthy life for five more years! Don's story is still available to enjoy on our church website's "Videos and Sermons" page: <http://www.campbellunited.org/videos>

After seeing our congregation's emotional reaction to Don's documentary story, I had always envisioned a television series based on miracles like Don's. When a friend and associate of mine unexpectedly came to me with a proposal to create a TV series based on real near death experiences, I knew the door was being opened.

Fast forward seven years... I am very excited to share with you that our year-and-a-half long work on a fascinating new TV series pilot called "Alive Again" is almost done! This docudrama TV series will explore the age old question of life after death. Each gripping episode will document stories told by medical experts, eye-witnesses, and the actual survivors who have flat lined (died), experienced the afterlife, were miraculously brought back to life, and how it has forever changed their lives. These are events that defy the laws of nature, and give hope to those of us who want to know what lies ahead with our own deaths, all from a factual perspective.



Our vision is for the series to be a ministry to the world - told naturally to the viewer in a way that delivers hope, inspiration, and new ways to look at our lives.



The pilot episode features the amazing story of Adriana Bryand-Gallardo who died during child birth and came back to life at a world-renowned hospital in Northern California.

We are still in final editing, special effects and music

composition of Adriana's story and plan to begin marketing the series to TV Networks after our fund-raising campaign is complete.



If you would like to learn more about the TV show, feel free to check out the website: www.AliveAgainTV.com

and campaign page

<http://www.indiegogo.com/projects/alive-again-tv-pilot-and-series>

You can also help by forwarding this article to your friends, family and associates and "Liking" Alive Again on Facebook - <https://www.facebook.com/AliveAgainTV>

I am hopeful that one day, we can all sit down together and watch this special pilot story together. What started seven years ago in our church is becoming a new realization and ministry.

With much appreciation,
Mark Shepherd ❖

The Season of Advent - *The Season of Joyous Sharing*

The season of Advent is almost upon us. To honor this very blessed season, you are invited to extend your blessings and generosity within our community by participating in Campbell United Methodist Church's Annual Advent Giving event.

On Sunday, December 8, you will be offered the opportunity to help two organizations with which the church has established relationships - Rosemary School and the Elmwood Correctional Facility, through the Correctional Institutions Chaplaincy (CIC). There will be a special time during the service to bring your contributions to the altar where Pastor Paul will bless these gifts before they leave the sanctuary.

In the coming weeks, a list of items most needed will be included in the bulletin addendum - Elmwood is always in need of larger sized sweatpants. We'd like to provide Rosemary School with some classroom items that are often purchased by the teachers, such as Kleenex. Watch for more suggestions coming soon.

Consider supporting the needs of Elmwood or Rosemary - or both! Let's share with others the warmth and joy of the season by participating in the Annual Advent Giving!

Gail Jacobs, Church & Society ❖

Circuit Writer



Who is the Greatest?

Rev. Larry LaPierre

Some questions should not even have to be asked in Church. This is one of them. Of course, it's unavoidable out in the world. We face it when we vote. We do it at work when we decide who to put in charge of a project. We reinforce it in school when we give grades. It happens when we wonder who we have to invite to our holiday parties.

Even the disciples speculated about who was the greatest in the Kingdom of God (Matt. 19:1-5, Mark 9:33-37, Luke 9:46-48). In Mark 9:35 Jesus responded with "Whoever wants to be first must be last of all and servant of all."

That's not what I was taught as a scientist. At Polaroid Corporation in the 1970s I was told to seek "exposure." If I wanted to get ahead I needed to give talks about my work that emphasized how important my results were and, by extension, how important I was.

Later, as a pastor I got mixed messages. Yes, we were encouraged to be humble in how we exercised our pastoral leadership. Yet, there was the opportunity to "move up" to better paying churches or to become a district superintendent or even a bishop if people saw how well we were doing. Some clergy found it hard not to be overwhelmed by their sense of self-importance. I had been a pastor for only two years, and I saw our bishop at Annual Conference when no one else was around. His name was George, and I asked him if I could call him "George." He seemed less than pleased when he answered, "Yes, as long as you don't abuse it." I had been used to interacting with senior department managers and divisional vice presidents in industry on a first-name basis. Obviously, not everyone is as approachable as those I knew in industry.

According to Jesus, the most important people in God's kingdom are those who are "last of all and servant of all." Is that how we deal with people

in the Church? Why should a pastor, a district superintendent or a bishop be regarded as more important than a lay person? Why should a person with wealth be more sought after as a member of our church and have more influence in the church than people who have less money? Why should someone who is living with a handicap condition be treated less kindly?

I've seen these problems in four denominations. Position, title, rank and financial rewards are sought after and dispensed to those who know how to climb the church ladder. We who want to belong to God's kingdom are called to be servants of all and last of all. Some churches expect the pastor to wash people's feet on Maundy Thursday in imitation of what Jesus did the night before he died (John 13:1-20). Yet, we still don't get it. In some places we wash not the feet of the poor, the less educated or the sick. We wash the feet of the church leaders, the staff or those who are well-known in the community. Even our practice of having a head table at a celebration raises the question of how we demonstrate our willingness to be "servants of all and last of all."

Rev. Larry LaPierre ❖



"Thanks Mission Control!"

Our hard working tech team upstairs each Sunday. Looking for more team members. Contact Pastor Paul to learn more.

CARTOON CORNER



CARE GIVERS MINISTRIES

In our society today the term care giver seems to bring up the image of someone giving physical care to another. They are often paid workers sent by health professionals with a goal of keeping elderly, infirm or rehabilitative patients in their own homes.

Campbell UMC's program of giving care is different. It is a friendly visitor to listen to a homebound person and to give spiritual comfort on behalf of our congregation. It is a regular phone caller, to remind mobility restricted persons that the church values them and has not forgotten. It is a lay ministry to bring consecrated communion elements to those no longer able to regularly attend Sunday worship services. It is a comforting presence for a church member in times of personal crisis. It may be regularly arriving letters to bring cheer and hope for the dark nights of the soul.

If you see yourself, a family member, or church friend who might benefit from a visitor, caller or letters, or maybe in some other way, please contact Ellen Droke, or Claudia Slayman to discuss. We are usually in the church office, 408-378-3472 x 23 on Tuesdays, Wednesdays and Thursdays. Claudia's e-mail address: claudia.slayman@gmail.com; Ellen's e-mail: eadroke@aol.com.

Please include in your prayers the 38 people who are presently connecting in this ministry. May it grow as the need expands and the call for service is heard.
Ellen Droke ❖

Methodist C.o.n.n.e.c.t.i.o.n

CARE-A-VANERS

CARE-A-VANERS to Monte Toyon



On the afternoon of Sunday, October 13 – right after the UMW tea – Gene and Elaine drove over Highway 17 to the Monte Toyon Methodist Camp. It is only 40 miles from our home, but takes a while to drive, due to the winding road that goes uphill and down. There were 10 Care-A-Vaners with Elaine and Eugene Hill representing Campbell UMC.

The majority of our members worked on Helgesson Hall replacing the back deck, sanding, staining, and painting the building.

Meanwhile Marge and Elaine were given a nice clean room to sew new curtains for Cary Lodge. This also required taking down the old curtains, modifying the curtain rods and installing the new curtains. On Friday we ran out of fabric. We had completed curtains for the 3 large suites and 4 of the smaller rooms. It would be a 2-week wait to get more fabric from the Aptos store. On Sunday, October 20, on our way home from church, Elaine and Gene purchased the rest of the fabric needed to make the curtains for the final 4 rooms. We hope to find an opening at camp to install the new curtains while the weather is still nice.

While we were at Monte Toyon there were 60 students from Ardenwood Elementary School attending Science Camp. We were invited to join them for meals in the dining hall. At each meal the students were challenged to throw away as little food as possible. If you don't want to eat it, don't put it on your plate. There was a huge cheer when there was less than a half-pound of food for the garbage. We were also able to participate in the science question of the day, and guess what the mystery item was. My favorite mystery item was the egg casing for a skate, sometimes called a "mermaids purse."

On Thursday Dave and Sue Sargent (and Sue's Sister), along with Marv and Ina Tanner, joined us for lunch, looked at our work, and led us on a hike to see the albino redwood tree. We all enjoyed seeing the deer and plethora of birds.

We were all grateful for the wonderful weather and opportunity to visit with friends.

Elaine Hill ❖



BRIGHT DAYS *Fall is in the Air*



After providing a summer of shade on hot afternoons, the leaves are falling on the playground at Bright Days -- and in this season of thanksgiving, there is much to be thankful for!

On the playground and in the classrooms, the children remind us daily of the small joys in life that come together to create golden childhood memories. They enjoy sharing smiles with friends at the snack table, feeling the cool sand between their toes during a barefoot walk, making mud pies for morning tea parties in the playhouse, raking the leaves to make a pile for jumping and cuddling with friends while listening to a favorite story book.

In our annual tradition, Bright Days Staff, parents and children gather on the playground for a potluck feast after school on Monday, November 25th, and Tuesday, November 26th. The tradition began years ago as an effort to foster a sense of community and as a way to express our gratitude for being part of each other's lives. So again this year, before we go off to enjoy the Thanksgiving holiday with our families and loved ones, the Bright Days community share a meal of thanksgiving for our community, our children and the love and care that binds us.

Mary Smith, Bright Days Director ❖



United Methodist Women



UMW Enchilada news

It has been my privilege to lead the making of the UMW enchiladas for several years, following in the footsteps of Sheri Woodhouse. Every year I get to work with so many wonderful women, and men, of the church who assist in the task. This year we assembled more than 1,300 enchiladas in about 3 hours. Raising over \$23,00 for our mission and ministry. I want to thank everyone who helped make this such a successful undertaking. I especially want

to thank Ray Dyer for being the best can opener I ever had -- opening 60 very large cans and keeping our floor semi-clean too. Also a big thanks to Linda Kropff who prints the 650 labels and gets them onto the boxes.

Thanks to our church community and their friends, we had 97 orders for 650 boxes of enchiladas. That is more than 80 pounds each of chicken and beef plus 75 pounds of cheese to make 1,300 total enchiladas. In the two days we worked 30 members and friends put in a total of 107 hours. That is a lot of love!

We hope you enjoy eating them as much as we do making them.

Janine Payton

Campbell UMW ❖

Calling All Knitters and Crocheters

UMW is looking for all knitters, crocheters and quilters to make prayer shawls and baby blankets for the 2014 United



Methodist Women Assembly. These shawls and blankets will be on display at the Assembly and then distributed to families and individuals in need following the event.

You don't have to be a member of UMW to participate. Prayer shawls and blankets need to be delivered to Melinda Knepp by February 16, 2014. There is no required pattern to follow. Suggested (but not mandatory) sizes are:

- Prayer shawl triangle - 65 inches long and 32 inch center back.
- Prayer shawl rectangle - 19 x 69 in. or 14 x 70 in.
- Baby blankets - 30 x 30, 32 x 32, 35 x 35 and/or 38 x 38 inches.

Assembly is a quadrennial event for United Methodist Women. Thousands of women from around the country and missions partners from across the globe will gather to grow in faith and learn new ways to strengthen the mission outreach in their circles, their local district, conference and jurisdiction groups. The 2014 Assembly will be held in Louisville, Kentucky next April. For more information you can go to <http://new.gbgm-umc.org/umw/assembly/> ❖

Layettes

Campbell UMW collects items once a month. The next collection will be on January 12 in the Fellowship Hall after Sunday service. Please check the after-Christmas sales for newborn size diapers (both cloth and disposable), six-month size sweaters and 3-month size onesies. Thank you. ❖



BOOK REVIEW

BY SUSAN JONES

From Preparation To Passion
by Eleanor Cooper Brown

Category: *Spiritual Growth*
Pages: 166
Rating: ****stars

You can do this wonderful devotional book daily during Lent. The book starts on Ash Wednesday and each day you have a Bible reading, Reflection Meditation, Sacred Songs and study notes that is prompted with a question.

What a wonderful way to bring us closer to God by the time we reach Easter. This book can be used year after year.

Susan Jones ❖

A Huge Thank You to Susan Jones for her dedication to the United Methodist Women in her interest and time she put in concerning the UMW Library and Book Reviews for the newsletter. We wish her well on her faith journey.

SAVE THE DATE!

MARMALADE FUND-RAISER

On January 11, 2014, marmalade will be cooked and processed to sell to raise funds for the United Methodist Women's 2104 Relay for Life Cancer event. We will need 8 oz. canning jars, so bring those unused jars to the kitchen (marked for UMW). Anyone with citrus trees who can donate fruit, please contact Susan Sargent at: hrhiker@aol.com. More information will follow in the Addendum.

UM Youth Fellowship CALENDAR 2013

Sunday, December 1

Board Games
11:30 a.m. to 1:00 p.m.

Sunday, December 8

UMYF Meeting
11:30 a.m. to 1:00 p.m.

Sunday, December 15

TBA
Service Project

Sunday, December 22

UMYF Meeting
Bagels & Lumanarias prep.
11:30 a.m. to 1:00 p.m.

Sunday, December 24

Light Lumanarias

Sunday, December 29

No Meeting

Sunday, December 31

New Years Eve Lock-In

FUN TIME at the AUTUMN FESTIVAL



PHOTOS BY STEVEN CHANG

A fun time was had at the combined Autumn Festival - NEW CREATION UMC AND CAMPBELL UMC - many thanks to everyone who contributed to make this a great event. Thanks to Steven for capturing the moment.





NON-PROFIT ORG.
US POSTAGE PAID
CAMPBELL, CA
PERMIT NO. 59

1675 Winchester Boulevard
Campbell, California 95008

Mailing Date: **Nov. 20, 2013**
Next Newsletter **DEADLINE**
Dec. 8, 2013
Return Service Requested

People reaching out, with open
minds, souls and hearts -
Nourishing spirituality
Engaging creativity
Building social justice
Providing loving, welcoming
community
- for Christ and the world.

HISTORY HELPERS

"snippets from our past"

125th Anniversary Sanctuary Panels - Tell the Story

Last month we asked, "Who was Wilson J. Wythe and how did he come to design the church?" Thanks to Elaine Hill and her personal connections, we now know more.

J. H. Wythe, who was the minister at Campbell Methodist Church from 1901 to 1903, was a cousin of Willson J. Wythe, the architect who designed our second sanctuary in 1911. (Willson, double "L", was his mother's maiden name.) Quoting from "Obituary Oakland High School Year Book":

Willson Joseph Wythe...was born in Sacramento, November 5, 1871, and died at Oakland March 12, 1926, at the age of 45. Willson attended Oakland High School, graduating in 1890. He attended the University of California, Berkeley and graduated with a Bachelor of Science in civil engineering in 1895. In his training as an architect he had the advantage of residence and periods of study in New York and abroad, where he made a special study of cathedrals, which was the basis of his success in building churches. About fourscore churches in California have been built from his plans, and many residences. For nearly twenty years he was a member of the faculty of UC Berkeley, teaching mechanical drawing and applied mathematics.

In 1911, John F. Wilson was the minister of the Methodist Episcopal Church, Campbell. He wrote, in his quarterly conference report, "The Conf. Year started in with all the promise of the best year that the Church has ever seen. The finishing and dedication of the new Church has been acknowledged to be one of the great events in the history of the Christian people in Campbell. Since the first day we held services in our new home the life and interest of the church has been on the increase. Some thought we were planning too large in building, but the Auditorium of the Church has been taxed to its capacity on nearly every Sunday since Dedication." ❖

